



ACOS

64-bit ADC

Application Optimization

- Optimize any application, including Microsoft SharePoint, Exchange, Lync, Oracle, DNS and more
- Improve web server response times and reduce required servers

Cost Effective Scalability

- High performance reduces legacy ADCs and OPEX
- Virtualization for multi-tenancy and consolidation
- Scale-up with Virtual Chassis (aVCS), no upfront investment
- Handle larger SSL key sizes (2048-bit+)
- More power, Intel Sandy Bridge CPU
- No performance licenses

Data Center Ready Today, and Tomorrow

- Compact 1U form factor with low power consumption
- Accelerate with SSL offload, RAM caching and compression
- Advanced features; GSLB, aFleX traffic control and aXAPI management
- Native IPv6 and Server Load Balancing Protocol Translation (SLB-PT) support
- No licenses for premium features

Built for Uptime and Peace of Mind

- Redundant power supply capable
- SSD versus HDD (no spinning media)
- Reliable server grade ECC memory
- High availability
- Application health checks

- Value: Lowest Cost Per Connection (CPS), Throughput and Session
- Efficiency: Lowest Power Usage, Highest Performance Per Watt (PPW)
- Reliability: Server Class Hardware Platform

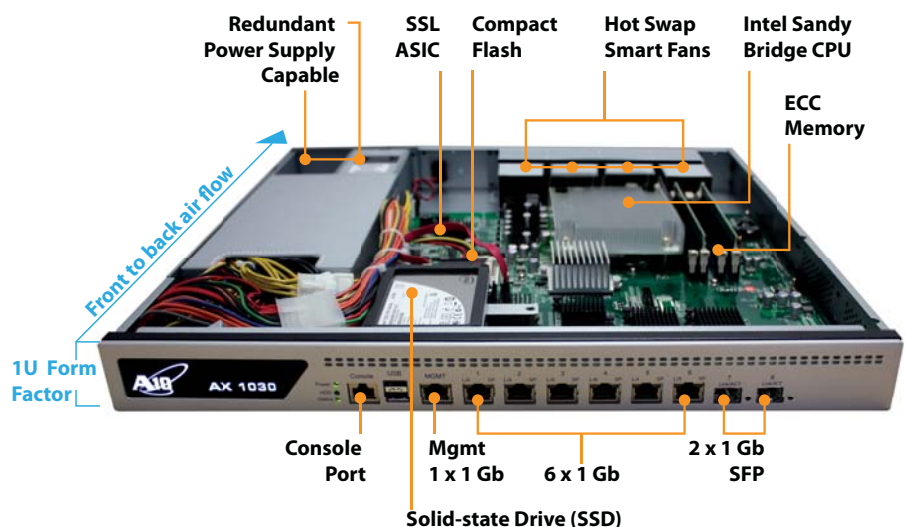
The AX 1030 is a new 64-bit 1U Advanced Application Delivery Controller (ADC) in the award winning A10 Networks line of hardware appliances. The AX 1030 offers the best value in an entry level platform for key Server Load Balancing, Virtualization and IPv6 Migration projects.

Like all AX Series hardware appliances, maximum performance and advanced software features are included, ensuring no budget surprises or need to purchase licenses during unforeseen peak loads.

The AX 1030 offers 7.5 Gbps of throughput, and 430,000 Layer 4 (L4) CPS while consuming a maximum 155 Watts, which translates to a breakthrough 2774 L4 CPS per Watt in a 1U platform.

Reliable operation with maximum uptime can be guaranteed with high quality hardware specifications and components not seen at this price point from any vendor. The AX 1030's server grade processor, Error Correcting Code (ECC) memory and solid-state drive (SSD) deliver data center robustness, all backed by world class support.

The AX 1030's reliability, scalability and performance dramatically raise the bar for any entry level ADC.



AX Series Features

Application Delivery Features

- Comprehensive IPv4/IPv6 Support
- Advanced Layer 4/Layer 7 Server Load Balancing
 - ◆ Fast HTTP, Full HTTP Proxy
 - ◆ High-performance, template-based Layer 7 switching with header/URL/domain manipulation
 - ◆ Comprehensive Layer 7 application persistence support
- Comprehensive load balancing methods
 - ◆ Round Robin, Least Connections, Weighted RR, Weighted LC, Fastest Response
- aFlEX – deep packet inspection and transformation for customizable, application-aware switching
- Advanced Health Monitoring
 - ◆ Comprehensive Protocol Support - ICMP, TCP, UDP, HTTP, HTTPS, FTP, RTSP, SMTP, POP3, SNMP, DNS, RADIUS, LDAP
 - ◆ TCL Scriptable Health Check Support
 - ◆ High Availability – Active-Active, Active-Standby configurations with sub-second failover
 - ◆ SIP Load Balancing for VoIP and other rich-media applications
 - ◆ STARTTLS support for Secure Email (POPS, SMTPS, IMAPS) & LDAPS
- Spam Filter Support – high-speed application of very large black/white lists
- Firewall Load Balancing (FWLB)
- Global Server Load Balancing (GSLB)
- Transparent and Gateway Mode Support
- Transparent Cache Switching (TCS)
- Link Load Balancing (LLB)

- Diameter AAA Load Balancing

Acceleration & Security Features

- HTTP Acceleration & Optimization
 - ◆ HTTP Connection Multiplexing
 - ◆ HTTP Caching
 - ◆ HTTP Compression
- SSL Acceleration
 - ◆ Hardware-based SSL Offload
 - ◆ Support for all TCP Protocols – SSL Termination, SSL Bridging (SSL Initiation)
- SSL Session ID Reuse
- SYN Cookies, IP Anomaly Detection
- Connection Rate Limiting/Connection Limiting
- DNS Application Firewall

High Performance, Scalable Platform

- ACOS Operating System
 - ◆ Multi-core Support
 - ◆ Linear Application Scaling
 - ◆ Linux on Control Plane
- ACOS on Data Plane

Networking

- Integrated Layer 2/Layer 3
- Transparent Mode/Gateway Mode
- Routing – Static Routes, IS-IS (v4/v6), RIP v2/ng, OSPF v2/v3, BGP4+
- VLAN
- Trunking
- Access Control Lists (ACLs)
- Traditional IPv4-->IPv4 NAT/NAPT
- IPv6-->IPv6 NAPT

IPv6

- Full management and feature support
- SLB-PT (Protocol Translation), SLB-64 (IPv4<->IPv6, IPv6<->IPv4)

Management

- Dedicated Management Interface (Console, SSH, Telnet, HTTPS)
- Web-based Graphical User Interface (GUI) with Language Localization
- Industry-standard Command Line Interface Support
- SNMP, Syslog, Alerting
- Port Mirroring
- REST-style XML API (aXAPI)

Virtualization

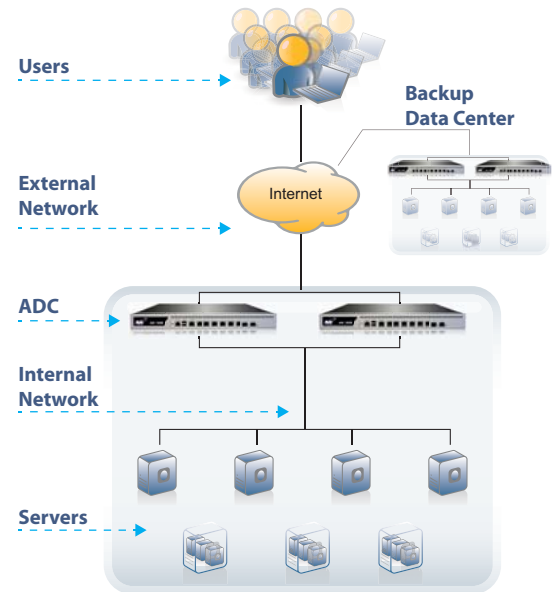
- aVCS (AX Virtual Chassis System)
- SoftAX Virtual Appliance (separate)
- Multi-tenancy with Application Delivery Partitions (ADPs)
 - ◆ Role Based Administration (RBA)
 - ◆ Partition Based Management
- Hypervisor acceleration and management integration

Carrier-grade Hardware

- Advanced hardware architecture
- Hot swap Redundant Power Supply option
- Hot swap smart fans
- Solid-state drive (SSD) and Compact Flash
- Error Correcting Code (ECC) memory

AX 1030 Hardware Summary

	AX 1030
Processor	1 x Quad-core
Memory	8 GB
Ethernet Interfaces	6 x 1 Gb Copper, 2 x 1 Gb Fiber (SFP)
Management Interface	1 Dedicated
Console Port	1 Console Interface
Solid-state Drive (SSD)	Yes
Compact Flash	Yes
Power Supply	Single (Dual Option), Removable 400 W, 100 – 240 VAC, Frequency 50 – 60 Hz
Max Power Consumption	155 W
Operating Temperature Range	0° – 40° C
Dimensions	1.7 in (H) x 17.2 in (W) x 16.6 in (D) 1U Rack Mountable
Unit Weight	17.5 lbs
Regulatory Certification	FCC Class A, UL, CE, TUV, CB, VCCI
Standard Warranty	90-day Hardware & Software



Application Delivery Landscape